



Palmstead.co.uk



Events 2016

Soft Landscape Workshop
What have plants ever done for us?

Housekeeping

- No fire alarms planned
- Wifi - no codes required
- Phones - silent please 
- Coffee & lunch available in both rooms
dietary requirements in Canterbury Suite

Palmstead team here to help visit them during the intervals



Adam



Denise



Simon



Geoff



Natalie

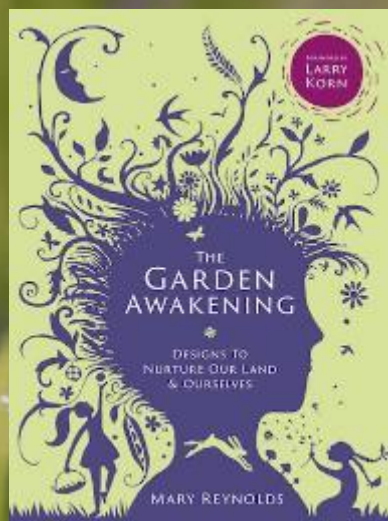


Peter

EMMA GREENWELL

TOM HUGHES

Mary Reynolds



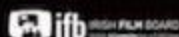
BASED ON AN INCREDIBLE TRUE STORY

DARE TO BE WILD

FOR THE DREAMER IN ALL OF US

A WINDHEE BROADCASTY PRODUCTION A GREEN EARTH LLC PRODUCTION A BAOBEE BELLS & BREAD THE BROADCASTING COMMISSION OF IRELAND BONO SCARVIA DA LÉIREAN IREISH FILM BOARD BROADWAY FILMS INTERNATIONAL LLC PRESENTS A CROWD'S NEST/TREASURE ENTERTAINMENT PRODUCTION "WILD" EMMA GREENWELL TOM HUGHES CHRISTINE MARENGO JANE BEE CO-PRODUCERS SUSAN WEGAN SARAH DAVIS PHOTO MICHEL YSAHANT PRODUCED SARAH JOHNSON
 PRODUCED PATRICIA LAMBRECHT EXECUTIVE PRODUCERS SARAH JOHNSON EXECUTIVE PRODUCERS CHRIS CASAS-CHAVEZ MUSIC BY COLM MAC CON KNOX/RENE GARDNER COSTUME DESIGNER CIRCULARA BOWLE PRODUCTION DESIGNER FERNA WOLFFY EDITOR NICKY EMERSON WALL CAMPION PEDRO ROD DIRECTOR OF PHOTOGRAPHY COLIN JONES DIRECTOR OF PRODUCTION CATRINE WATERS PRODUCED BY ROBERTO DAL POLE AND REBECCA FULFORD/AGAN WRITTEN AND DIRECTED BY WINDHEE BROADCASTY

DISTRIBUTED BY
MIRACLE COMMUNICATIONS



www.wildfilm.com



RADIANTLY/MONTEFERNATIONAL





Three Peakers Ride Again

Snowdon to Lands End

PERENNIAL 
GARDENERS' ROYAL BENEVOLENT SOCIETY
Helping Horticulturists In Need Since 1839

Please visit our exhibitors stands



Packard Publishing



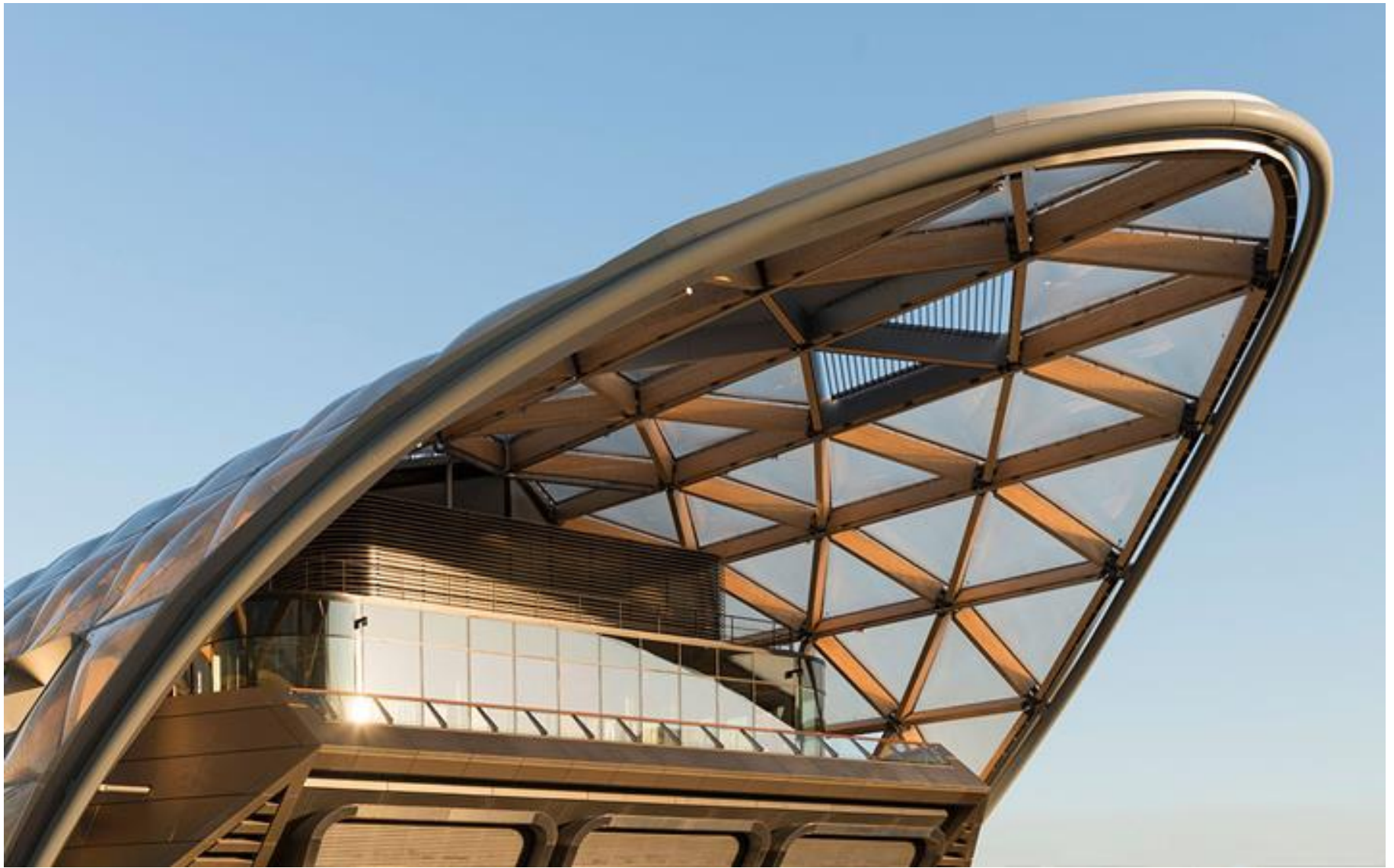
Our nursery is nearby visit till 6





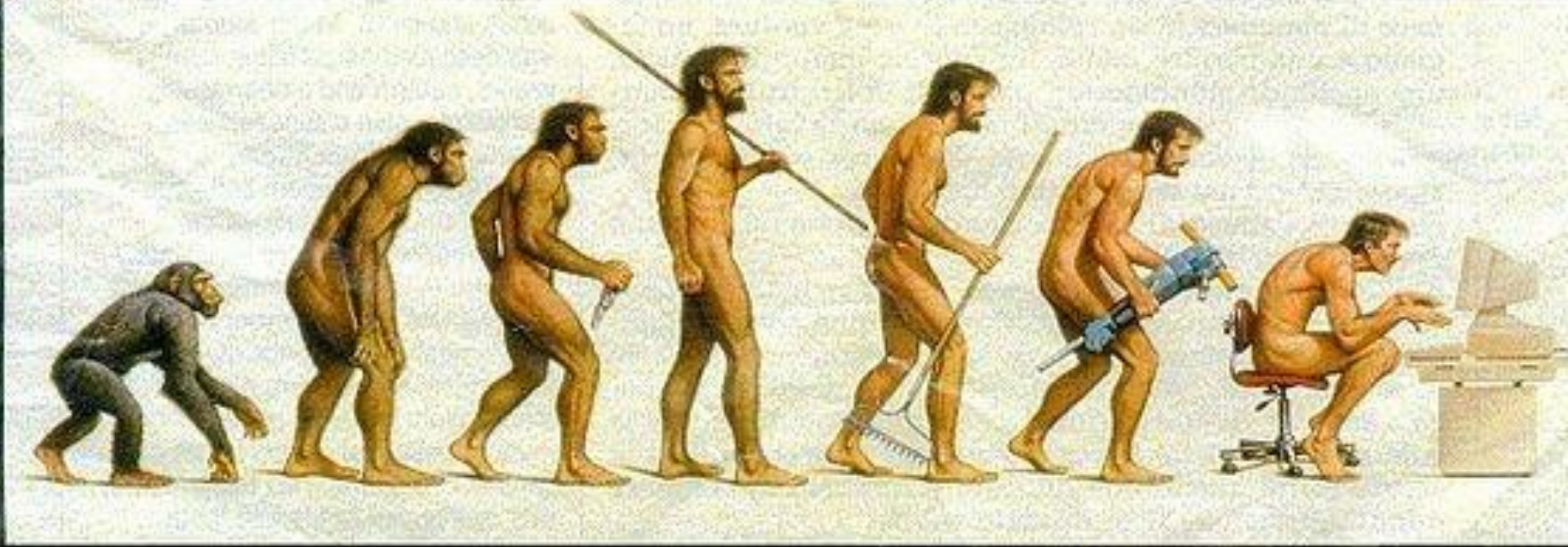
What have plants done for us?







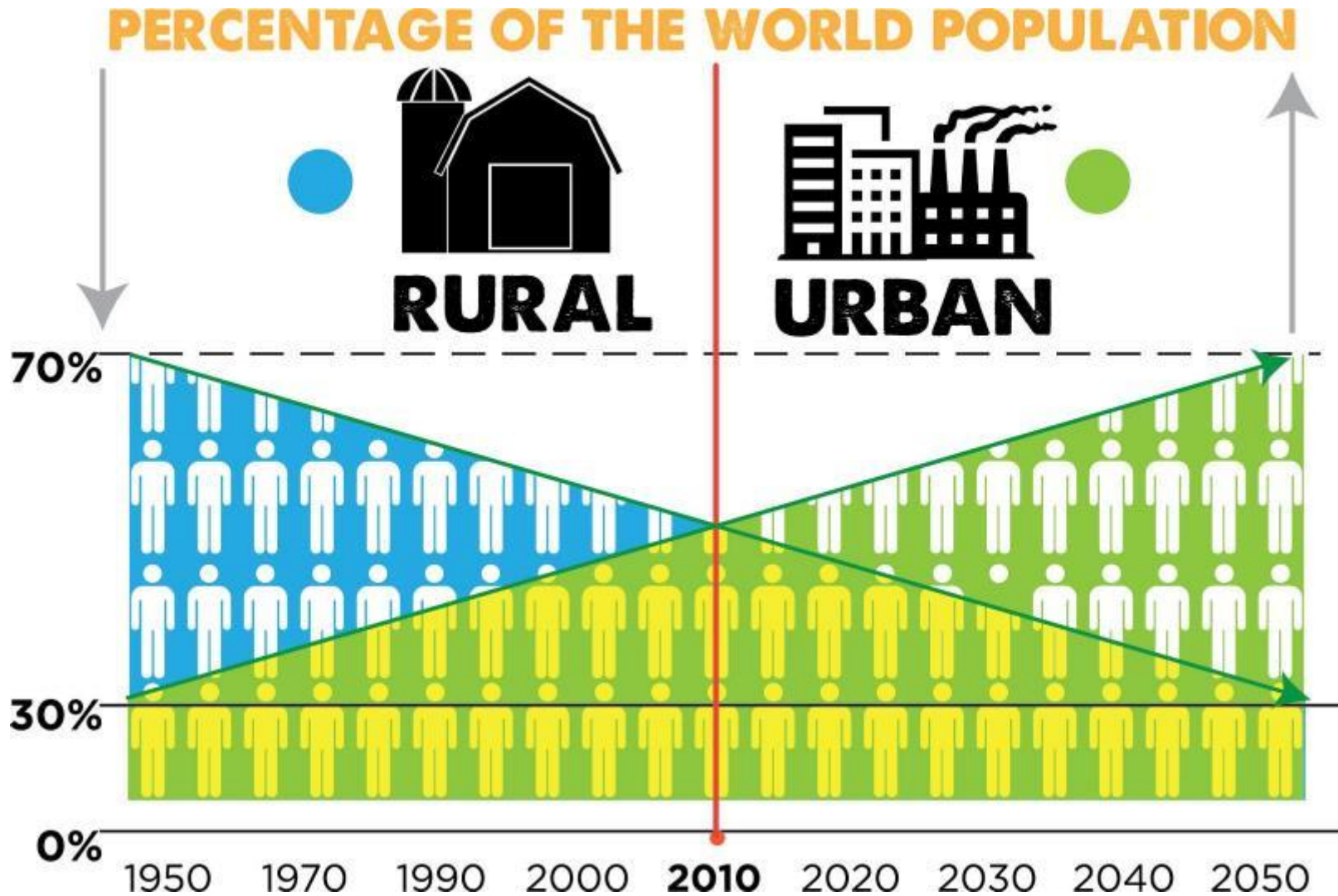




Evolution 5,000,000+ yrs hardwired to natural environment
but only 1000+/- yrs urban

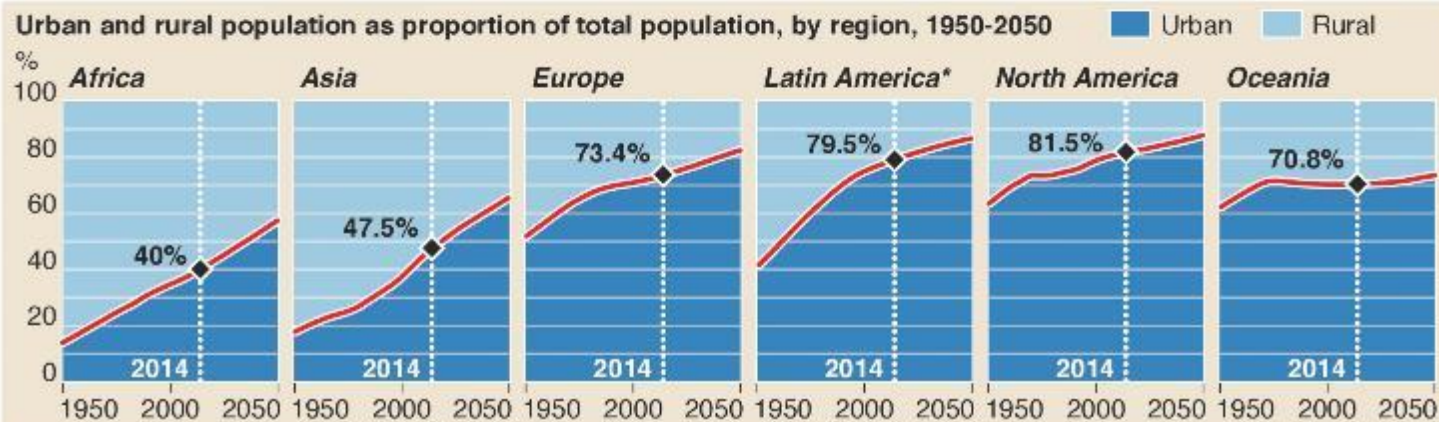
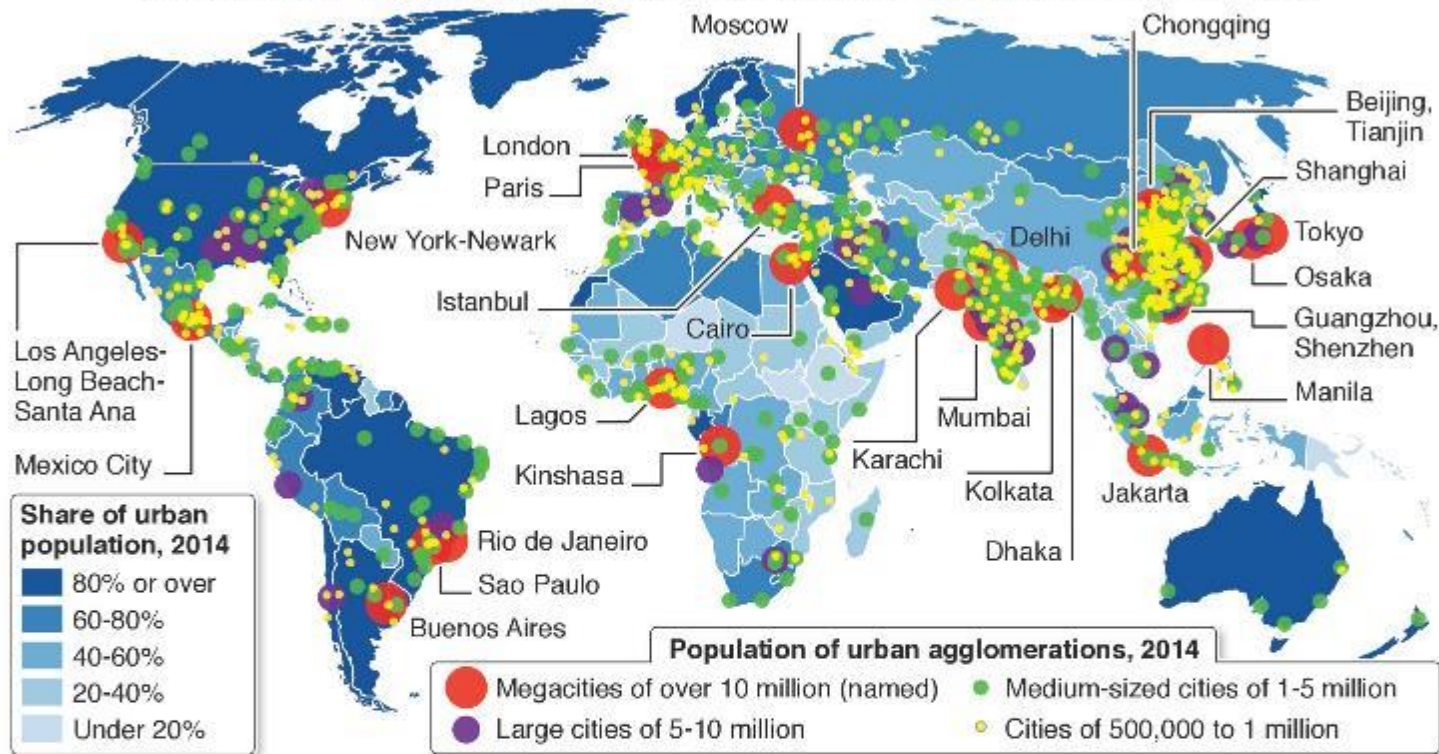


Population movement to urban



UN finds more than half of people now live in cities

More than half of the global population currently lives in urban areas, with that proportion projected to reach two-thirds by 2050, according to the UN World Urbanization Prospects report



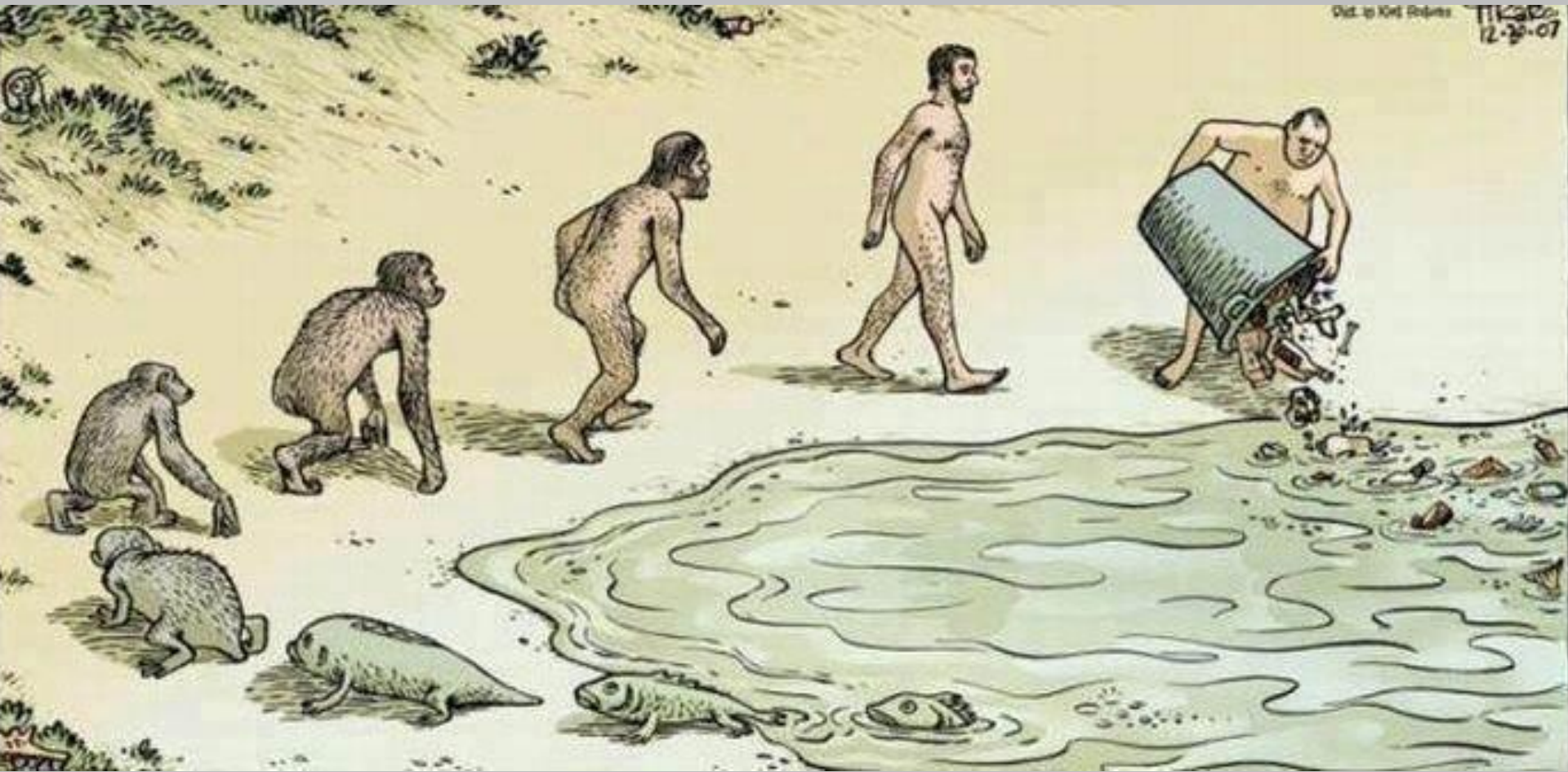
A satellite night view of Europe, showing the continent illuminated by city lights. The lights are concentrated in major urban centers and along coastlines, creating a dense network of yellow and white points against the dark background of the night sky. The text 'UK 80%' is overlaid in the upper right quadrant.

UK 80%



Urban = hotter, polluted air, flooding

Disconnected from natural world



“Pre-school children spending < 2hrs outdoors a week” - Wendy Titman
(SGD Conference 2011)



Only connection is digital and (? “social”)



Will the natural world bite us back?





We are better when connected to our
natural environment

We need the Urban Forest











- Dr Mark Spencer
Biodiversity &
science

- Jackie Herald
& Shenagh Hume
Unintended
consequences



- Q & A after all
sessions
- Coffee break



- Dr Tijana Blanusa (RHS)
Using plants to moderate urban air pollution & bring other benefits



- Anne Jaluzot (TDAG)
Air conditioning for Cities
- Nick Coslett
What we can do for you?



- Raoul Curtis-Machin
Bio-security - are we
doomed?



- Jinny Blom
Planting for our health &
wellbeing

